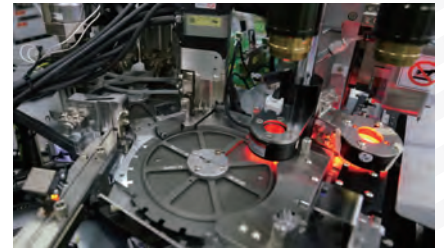
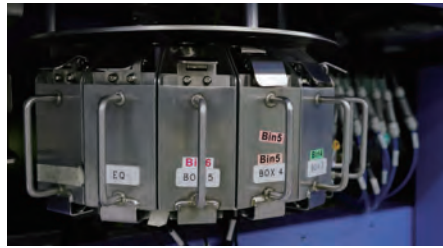
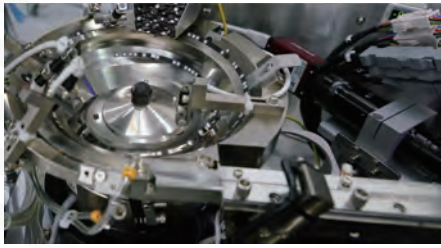


YT6200

IC/QFN/Light Sensor TEST HANDLER



Capability & Specification

Main Function	QFN package sizes for a variety IC/Light Sensor
Application device	QFN (2x2x0.6t~7x7x0.6t)
	Light Sensor (2x2x0.5t~7x7x4t)
Components Input Method	Bowl feed and Line feed vibration system automatically feeding components
Wheel diameter of taping reel	Input wheel diameter Max. 700mm Received wheel diameter Max. 400mm, Reel. 7"
Production rate	QFN3x3=Max. 25K UPH (Only Tape reel) QFN3x3=Max.
	20K UPH (Test Time<0.2S)
	Light Sensor3x3=Max. 25K UPH
Dimensions	1,530mm (W) x 950mm (D) x 1,650mm (H)
Weight	Around 600KG
Power requirement	Single phase AC 10A /220V 50~60Hz
Air pressure	5~6Kg/cm2

ALL SPECIFICATIONS ARE SUBJECT TO CHANGE WITHOUT NOTICE



PHONE: + 886 3-666-9968 WEBSITE: WWW.YTEC.COM.TW

YOUNGTEK ELECTRONICS CORP.
4F, NO. 5, KEJI RD.
SCIENCE-BASED INDUSTRIAL PARK
HSINCHU CITY 30078