

# YT6180

## Pick & Place Test Handler

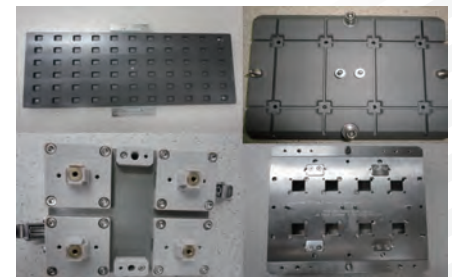
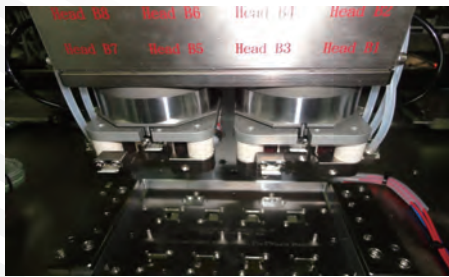


### KEY FEATURES

- High tolerance
- Low vibration to fit smaller IC
- Smart equipment with user-friendly interface
- Aligned the height of IC test automatically and reducing adjusting time.
- Reducing the vibration and extend using time of test socket by rotary floating head designed.
- Press down height of index arm could tolerate  $\pm 0.3\text{mm}$ , so that it could prevent IC pin from crush and increase testing yield.
- Rotary floating head designed to protect test socket and extend lifespan.

▶ 8x test stations standard, 16x test stations optional

▶ User-friendly interface



### ABOUT YT6180

YT6180 is a Pick & Place IC Test Handler with high performance, high efficiency and high stability. YT6180 provide three modes of placing IC on socket : Fast, slow, or drop down. These three modes improve the stability of IC testing and extend using time of test socket. YT6180 provides simple operation and user-friendly interface.

# YT6180

## Pick & Place Test Handler

### Capability & Specification

Test Site	YT6180: 1*2/1*4/2*2/2*4/2*8
Applicable Device Type	QFP、LQFP、PLCC、SOP、TSOP、BGA、QFN、uBGA、PGA and FBGA
Device Size	3*3~50.0*50.0mm
Index Time	≥0.9Sec.
Throughput	Device Size:3x3mm~7x7mm,UPH Max:15000~10000 (2x4 mode)
Jam Rate	1/5000
Transfer Hand	8
Tray Type	EIA/JDEC Tray
Input Tray	Auto Input Tray:1、Empty Tray:2
Output Tray	Auto output tray: 3 for output devices Fix Tray: 3 for output devices
Binning	Max.: 12 Bins Auto output Tray: 3 Fix output Tray: 3 (each Fix output tray can set partition from 1~3 bin)
IC Contact	Fast/Slow/Drop-down Contact mode
Index Arm	Rotation
Detect Shuttle IC	Inductive contrast sensor
Temperature	Ambient, +50°C~ +90°C +/- 2°C, +90°C~ +135°C +/- 3°C(Option)
Test Interface	GPIB Interface(Standard), TTL(option)/RS-232 Interface(option)
Operation	Windows 7
Net Weight	Around 1200KG
Dimension	2100mm(L)x1700 mm (W) x 2000 mm (H)
Power Requirement	AC 220V/, 50~60Hz, Single Phase
Compressed Air	Dry Air of /cm <sup>2</sup> (0.49Mpa) FLOW: static stats 280 L/min (static), dynamic 220 L/min (dynamic)
Double Chip Detect	CCD

ALL SPECIFICATIONS ARE SUBJECT TO CHANGE WITHOUT NOTICE



PHONE: + 886 3-666-9968 WEBSITE: WWW.YTEC.COM.TW

YOUNGTEK ELECTRONICS CORP.  
4F, NO. 5, KEJI RD.  
SCIENCE-BASED INDUSTRIAL PARK  
HSINCHU CITY 30078